

**Original Article**

**Autologous Hematopoietic Stem Cell Transplantation for High-risk Acute Lymphoblastic Leukemia: non-Randomized Study with a maximum Follow-up of more than 22 Years**

Grzegorz Helbig<sup>1</sup>, Malgorzata Krawczyk-Kulis<sup>1</sup>, Malgorzata Kopera<sup>1</sup>, Krystyna Jagoda<sup>1</sup>, Patrycja Rzepka<sup>2</sup>, Aleksandra Majewska-Tessar<sup>2</sup>, Marta Hejla<sup>2</sup> and Slawomira Kyrzcz-Krzemien<sup>1</sup>

<sup>1</sup> Department of Hematology and Bone Marrow Transplantation, Silesian Medical University, Katowice, Poland

<sup>2</sup> Students Research Group, Department of Hematology and Bone Marrow Transplantation, Silesian Medical University, Katowice, Poland

Correspondance to: Grzegorz Helbig, MD, PhD. Department of Hematology and Bone Marrow Transplantation, Silesian Medical University, 40-032 Katowice, Dabrowski street 25. Tel.+0048322591310, Fax. +0048322554985. E-mail: [ghelbig@o2.pl](mailto:ghelbig@o2.pl)

**Competing interests:** The authors have declared that no competing interests exist.

---

Published: July 1, 2014

Received: March 19, 2014

Accepted: May 31, 2014

Citation: Mediterr J Hematol Infect Dis 2014, 6(1): e2014047, DOI: 10.4084/MJHID.2014.047

This article is available from: <http://www.mjhid.org/article/view/13137>

This is an Open Access article distributed under the terms of the Creative Commons Attribution License (<http://creativecommons.org/licenses/by/2.0>), which permits unrestricted use, distribution, and reproduction in any medium, provided the original work is properly cited.

---

**Abstract.**

**Objective.** To evaluate the efficacy and toxicity of autologous hematopoietic stem cell transplantation (AHSCT) for high-risk acute lymphoblastic leukemia (ALL).

**Material and methods.** Overall, 128 high-risk ALL patients at a median age of 26 years (range 18-56 years) at diagnosis received AHSCT between 1991-2008. Induction treatment was anthracycline-based in all patients. Conditioning regimen consisted of CAV (cyclophosphamide, cytarabine, etoposide) in 125 patients whereas 3 subjects received cyclophosphamide and TBI (total body irradiation). Bone marrow was stored for 72 hours in 4°C and re-infused 24 hours after conditioning completion. Bone marrow was a source of stem cells in 119 patients, peripheral blood in 2 and 7 subjects received both bone marrow and peripheral blood.

**Results.** With a median follow-up after AHSCT of 1.6 years (range 0.1-22.3 years), the probability of leukemia-free survival (LFS) for the whole group at 10 years was 27% and 23% at 20 years. Transplant-related mortality at 100 days after AHSCT was 3.2%. There was a strong tendency for better LFS for MRD-negative patients if compared with patients who had positive or unknown MRD status at AHSCT (32% vs 23% and 25%, respectively;  $p=0.06$ ). There was no difference in LFS between B- and T-lineage ALL as well as between patients transplanted in first complete remission (CR1) and CR2. LFS at 10 years for patients with Philadelphia-positive (Ph+) ALL at transplant was 20% and this was comparable with subjects with negative and missing Ph status (26% and 28%;  $p=0.97$ ).

**Conclusions.** The results of AHSCT for high-risk ALL remains unsatisfactory with low probability of long-term LFS.

---

**Introduction.** The clinical outcome of adult acute lymphoblastic leukemia (ALL) remains far unsatisfactory with a long-term survival of about 50% for patients <60 years and merely 10% for older subpopulation.<sup>1,2,3</sup> An initial therapy including remission induction followed by an intensified consolidation results in complete remission (CR) rate of 80%-90% with early death in less than 10% of treated patients.<sup>2,4,5</sup> The optimal post-remission therapy for adult ALL represents a major challenge and further management is usually risk-adapted,<sup>6</sup> however the role of hematopoietic stem cell transplantation (HSCT) was found to be highly controversial as demonstrated by conflicting results of various studies. Some authors did not demonstrate any differences between chemotherapy and allogeneic/autologous HSCT<sup>7</sup> whereas others reported on a significant superiority of allogeneic HSCT in high-risk ALL patients.<sup>5</sup> A follow-up of the French LALA-87 study demonstrated a trend favoring an autologous HSCT (AHSCT) over chemotherapy in patients with high-risk features, but there was no difference between chemotherapy, autologous and allogeneic HSCT in standard-risk ALL population.<sup>8</sup> The summary of the three randomized studies from LALA group comparing chemotherapy and AHSCT in high-risk ALL patients with no sibling donors found a significantly lower risk of relapse at 10 years in the autologous group with no improvement in overall survival.<sup>9</sup> Recently published data indicates that minimal residual disease status (MRD) before AHSCT is a predictor of better clinical outcome in high-risk ALL subjects transplanted in first complete remission (CR1), but further prospective studies are required.<sup>10</sup>

The goal of our retrospective study was to analyze the results of AHSCT in 128 high-risk ALL patients.

### **Material and Methods.**

**Study design.** One hundred and twenty eight patients at a median age of 26 years (range 18-56 years) received AHSCT in our center in years 1991-2008. They were recruited from several hematologic institutions. Patients were eligible for AHSCT if they had no sibling or alternative matched donor and met the following criteria of high risk (HR) ALL (at least one criterion must be met): 1) age  $\geq$  35 years, 2) white blood cell (WBC) count at diagnosis  $\geq 30 \times 10^9/L$  for B-cell ALL and  $\geq 100 \times 10^9/L$  for T-cell ALL, 3) pro-B, early-T and mature T immunophenotype, 4) second or subsequent complete remission (CR) and 5) the presence of adverse cytogenetics: (Philadelphia-positive ALL, i.e. t(9;22) and/or BCR-ABL transcripts; ALL with 11q23 abnormality and/or MLL-AF4 transcripts; ALL with t(1;19) and/or E2A-PBX1 transcripts; ALL with complex karyotype and hypodiploidy). Due to the fact

that some patients were referred for AHSCT from other centers, not all data were available for all patients.

**Induction treatment.** Induction treatment was anthracycline-based in all study patients, but chemotherapy regimens varied depending on study protocol used. Most adults ALL patients received therapy according to the Polish Adult Leukemia Group (PALG): 4-91 (n=20); 4-96 (n=46); 4-2002 (n=28)<sup>11,12,13</sup> or German Multicenter Study Group for Adult ALL (GMALL; n=34).<sup>14</sup> Central nervous system (CNS) prophylaxis consisted of intrathecal administration of methotrexate, cytarabine and steroids and/or cranial irradiation (depending on study protocol and year of diagnosis). One hundred and seven patients achieved CR1 (84%) whereas 21 subjects had CR2 at transplant (16%).

**Investigation of minimal residual disease.** Minimal residual disease (MRD) was evaluated in bone marrow samples on the day of aspiration by multiparametric flow cytometry: EPICS-XL (Beckman Coulter Inc. Marseille, France) and FACSCanto II (Becton Dickinson, Biosciences, San Jose, CA, USA). The "Stain&Lyse&Wash" method for staining of the surface markers and Fix&Perm Cell Permeabilization Kit (Invitrogen) for simultaneous staining of surface and intracellular markers were applied according to the producer's instructions. At least 2-3 different aberrant phenotypes were examined to avoid false negative results. The isotypic negative controls and normal bone marrow samples were used to avoid false positive results. At diagnosis bone marrow samples were stained with a panel of 3-18 triple combinations of antigens. Only phenotypes that have been found to be informative for MRD examinations (>50% expression on leukemic cells before treatment and <0.1% in normal bone marrow) were used for disease monitoring. The 3 following aberrant phenotypes were analyzed: 1) ectopic phenotypes 2) asynchronous antigen expression/overexpression within the same line and 3) co-expression of antigens from different cell lines. The "quadrant" and "empty spaces" techniques were applied for searching of these abnormal phenotypes. MRD status was assessed before conditioning regimen using a panel of combinations of antibodies and level of 0.1% was used as a cut-off point.<sup>14</sup> In sum, data on MRD were available for 57 patients; 40 were MRD negative and 17 MRD positive. The results of MRD were missing for 71 subjects.

All BCR-ABL positive patients had p190 transcripts and all they were found to have Philadelphia chromosome on cytogenetic study. BCR-ABL status was monitored using real-time polymerase chain reactions (PCR) assays.<sup>15</sup> Data on Philadelphia status at

transplant was known for 53 patients; and 5 out of them were Ph+ at transplant (9%). No patient received tyrosine kinase inhibitors, both before and after transplantation. No other cytogenetic high-risk patients were identified in our study group.

**Transplant details.** The conditioning regimen consisted of CAV (cyclophosphamide 60mg/kg on days -3,-2; cytarabine 2000mg/m<sup>2</sup> on days -3,-2,-1 and etoposide 800mg/m<sup>2</sup> on days -3,-2) in 125 patients whereas 3 subjects received cyclophosphamide 120mg/kg on days -6,-5 and total body irradiation (TBI) with 12 Grey on days -3 to -1. Bone marrow was collected in general anesthesia, stored for 72 hours in 4°C without any processing and re-infused 24 hours after conditioning ending. Bone marrow was a source of stem cells in 119 patients, peripheral blood in 2 and 7 subjects received both bone marrow and peripheral blood. A median number of transplanted nuclear cells and CD34+ cells was 2.11x10<sup>8</sup>/kg body weight (range 0.86-7.04) and 1.7x10<sup>6</sup>/kg body weight (range 0.16-36.2), respectively. A median time to achieve an absolute neutrophil count >1.0x10<sup>9</sup>/L and platelet

count >50x10<sup>9</sup>/L was 16 days. No granulocyte colony stimulating factor (G-CSF) was used. Patients demographic and transplant data were shown in **table 1**.

**Statistical analysis.** The probability of leukemia-free survival (LFS) was defined as the time interval from transplant to the relapse or death in CR and it was calculated according to Kaplan-Meier method. All calculations were made from the date of transplantation. Comparisons between the variables were carried out by log-rank test. Statistical significance was defined at a P value <0.05. A Cox model was used to identify prognostic variables. The following variables were included in Cox regression model: gender, age, the type of induction protocol, WBC count at diagnosis, disease immunophenotype, CNS involvement, disease status at transplant, MRD status at transplant, year of transplant (before and after 2000), time from diagnosis to transplant, the number of transplanted NC and CD34+ cells. Transplant-related mortality (TRM) was defined as death within 100 days

**Table 1.** Patients characteristics and transplant data.

Variable	B-cell ALL (n=93)	T-cell ALL (n=35)	p
Male/Female; no	57/36	26/9	0.21
Median age; years, range at diagnosis	26.2 (18-56)	25.4 (18.8-53.1)	0.93
at transplant	27.4 (18.7-56.6)	25.9 (19.4-53.5)	0.74
WBC count at diagnosis (x10 <sup>9</sup> /L); median, range	7.2 (0.5-524.0)	21.6 (2.1-622.0)	0.16
CNS involvement at diagnosis; no, %	5 (5)	1 (3)	0.53
Induction regimen; no, %			
GMALL	23 (25)	11 (31)	0.53
4-91	15 (16)	5 (14)	
4-96	35 (38)	11 (31)	
4-2002	20 (11)	8 (25)	
Median time from diagnosis to AHSCT; months, range	9.2 (1.5-115.7)	8.9 (2.7-53.7)	0.50
Hematologic status at AHSCT; no, %			
CR1	77 (83)	30 (85)	0.79
CR2	16 (17)	5 (15)	
BCR-ABL status at AHSCT; no, %			
Negative	42 (45)	6 (17)	0.53
Positive	5 (5)	0 (0)	
Missing	46 (50)	29 (83)	
MRD status at AHSCT; no, %			
Negative	28 (30)	12 (34)	0.25
Positive	15 (16)	2 (6)	
Missing	50 (54)	21 (60)	
NC count (10 <sup>8</sup> /kg); median, range	2.1 (0.9-7.0)	2.0 (0.8-4.8)	0.90
CD34+ count (10 <sup>6</sup> /L); median, range	1.6 (0.1-24.7)	2.2 (0.4-36.2)	0.30
ANC >1.0 (x10 <sup>9</sup> /L) post AHSCT (days) median, range	16 (12-28)	17 (11-45)	0.29
PLT >50 (x10 <sup>9</sup> /L) post AHSCT (days) median, range	15 (10-53)	16 (10-42)	0.52
Median time of AHSCT hospitalization; days, range	28 (18-180)	29 (19-52)	0.57
Median follow-up after AHSCT; years, range	1.63 (0.008-22.3)	1.49 (0.05-21.9)	0.49
Median follow-up from diagnosis; years, range	2.85 (0.54-26.2)	2.52 (0.56-26.4)	0.72

Legend: AHSCT=autologous hematopoietic stem cell transplantation; ALL=acute lymphoblastic leukemia; ANC=absolute neutrophil count; CNS= central nervous system; CR=complete remission; MRD=minimal residual disease; NC=nuclear cells; PLT=platelets

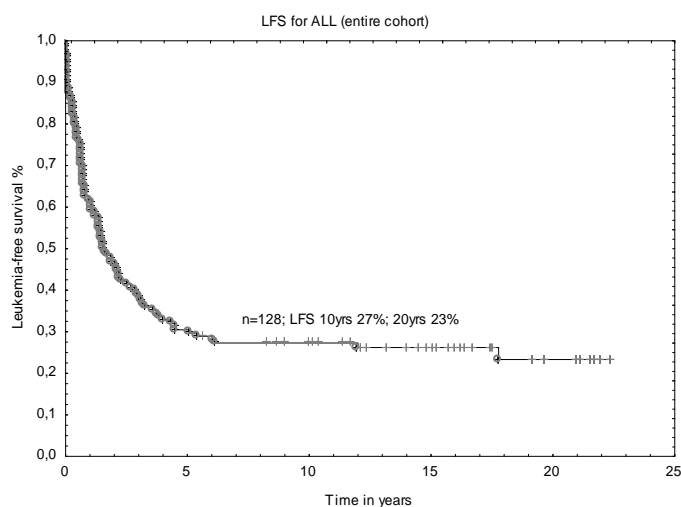
post autologous HSCT not related to the disease, relapse and progression.

**Results.** One hundred and twenty eight patients at median age of 27 years at transplant (range 18.7 – 56.6 years) were analyzed in this retrospective study. A median time from diagnosis to transplant was 9.2 months (range 1.5-115.7 months). With a median follow-up after AHSCT of 1.6 years (range 0.1-22.3 years), the probability of LFS for the whole group at 10 years was 27% and 23% at 20 years (**Figure 1**). Four patients died due to infectious complications early after transplant and one died due to intracerebral hemorrhage (TRM=3.2%). The reason of death in the remaining subjects was disease relapse with subsequent resistance to re-induction treatment or therapy-related complications. One relapse occurred >10 years after transplant. Details of transplant-related complications were shown in **table 2**.

No difference in the probabilities of LFS was found between patients transplanted before (n=71) and after 2000 (n=57). No statistical difference was found

between patients with B-cell and T-cell ALL as well as between patients transplanted in CR1 vs CR2 in regards to demographic and laboratory data. There was no difference in estimated LFS between B-lineage and T-lineage ALL at 10 years; 24% vs 34%, respectively (p=0.48) as well as for patients transplanted in CR1 and CR2 (30% vs 9%; p=0.22). There was a strong trend towards better LFS at 10 years for patients with negative MRD at transplant when compared with subjects who had positive or unknown MRD (32% vs 23% vs 25%; p=0.06). The impact of MRD status on LFS has not been also observed when we restricted our study cohort to the patients with known MRD status and CR1 at transplant; the probabilities of LFS at 10 years were 35% for MRD-negative and 30% for MRD-positive subjects, p=0.5. Only 5 patients were found to be Ph+ at transplant, but they remained MRD negative by flow cytometry. LFS at 10 years for this small subgroup was 20% and this was comparable with that seen for subjects with undetectable and missing Ph status (26% and 28%; p=0.97). No factor was found to have a significant impact on LFS in multivariate Cox regression model.

**Figure 1.** Leukemia-free survival after AHSCT (entire cohort).



**Table 2.** Transplant-related complications.

Description of complication	Number of involved subjects; no, % (N=128)#
Fever of unknown origin	49 (38)
Stomatitis/pharyngitis	49 (38)
Any serious complaints	38 (30)
Herpetic stomatitis	11 (9)
Gastro-intestinal disturbances	11 (9)
Thrombosis and hemorrhage	10 (8)
Bronchitis/pneumonia	4 (3)
Urinary tract infection	4 (3)
Septic shock	3 (2)
Increased liver enzymes	3 (2)
Central catheter-related infections	3 (2)
Tonsillitis	1 (1)
Otitis	1 (1)

# single patient may have more than one complication.

**Discussion.** AHSCT for ALL has not shown a significant advantage over conventional chemotherapy in a majority of randomized studies and that was proved for any particular risk groups.<sup>8,16,17</sup> It may result from two main aspects of AHSCT, namely 1) the contamination of graft by residual leukemic cells and 2) the lack of graft-versus-leukemia effect. There are only single reports on the use of different purging methods in patients undergoing AHSCT, but none of these studies demonstrated outcome benefits if compared with “no purging” procedure.<sup>18,19,20</sup>

Prior trials in high-risk ALL analyzed the efficacy of donor vs no donor outcomes after consolidation treatment. Then, the subjects with lacking donor were randomized between AHSCT and maintenance with chemotherapy. Unexpectedly, two large studies of EORTC and PETHEMA groups failed to prove that allogeneic sibling HSCT yielded a better LFS than AHSCT or chemotherapy. There was also no difference if AHSCT was compared with chemotherapy.<sup>5,21</sup> The LALA-94 trial was the first that demonstrated the superiority of allogeneic HSCT in high risk ALL patients, but the same study did not show any advantage of AHSCT over chemotherapy.<sup>2</sup> Moreover, the up-to-date largest international study showed that patients randomized to AHSCT had a significantly lower 5-year overall survival than these treated with chemotherapy (37% vs 46%).<sup>22</sup> It should be emphasized that no beneficial effect of AHSCT in first complete remission was demonstrated if compared with chemotherapy in meta-analysis study with 2962

Philadelphia-negative ALL patients. The authors analyzed data from five randomized trials comparing AHSCT and chemotherapy and they found no difference in relapse rate. Moreover, there was a tendency toward higher TRM and inferior survival in autografted subjects. The conclusion from this analysis is that autograft has no advantage over chemotherapy in ALL transplanted in CR1.<sup>16</sup> The results of our analysis despite many drawbacks resulting from a retrospective nature of the study, seem to be comparable with data provided by others. The LALA-85, -87 and -94 trials reported on 10-year probability of LFS of 20% for AHSCT in CR1 of high-risk ALL.<sup>9</sup> It should be mentioned that the comparison with other studies is difficult, and it is probably due to the difference in conditioning regimen (usually TBI and Cyclophosphamide) and purging methods.<sup>23</sup>

The advantages of our study were a quite large number of included patients, a uniform conditioning regimen administered in most patients as well as the homogeneous use of bone marrow as a source of stem cells. However, the leukemic contamination was not examined in transplanted marrow. There were single attempts to improve the results of AHSCT in ALL setting by an intensification of conditioning regimen and the preemptive results based on the small number of included patients were found to be satisfactory. For transplanted subjects the LFS at 5 year was 53% with TRM of 5%.<sup>24</sup>

One may consider to offer AHSCT or allogeneic unrelated donor (URD) transplantation for high-risk ALL patients who lacking a family donor. A large study with 712 ALL patients compared the outcomes of autologous and allogeneic URD HSCT performed in first or second CR. There was no difference in engraftment rate, but TRM was significantly higher after URD transplantation (42%) than after autologous transplant (20%). Of note is that relapse rate was less frequently seen in the former group (14% in CR1 and 25% in CR2) if compared with the latter one (49% in CR1 and 64% in CR2). Nevertheless, overall survival rates at 3 years were comparable between URD HSCT and AHSCT for patients transplanted in CR1 (51% vs 44%) and CR2 (40% vs 32%).<sup>25</sup>

Some papers have shown that MRD status before transplant may have an impact on LFS in high risk adult patients.<sup>10,26</sup> Patel et al. performed a sub-analysis including 25 ALL patients with known MRD status before AHSCT. It was demonstrated that the presence of MRD ( $\geq 10^{-4}$ ) was associated with lower LFS at 5 years (25%) if compared with MRD-negative ( $< 10^{-4}$ ) subjects (77%).<sup>10</sup> The other study included 123 high risk ALL patients autografted in CR1. The study patients were collected from eight European centers and MRD assessment was based on different methods

(flow cytometry and polymerase chain reaction). The estimated 5-year LFS was significantly higher for subjects with negative MRD before transplant (57%) if compared with these transplanted with positive MRD (17%). That was also true for T-lineage ALL and a tendency was shown for B-origins ALL. In a multivariate analysis, only negative MRD was associated with better post-transplant outcome.<sup>26</sup> Our study did not show a significant difference in LFS between MRD-positive and MRD-negative ALL patients at transplant. Moreover, the LFS was comparable between these two subgroups when the analysis was restricted to the patients undergoing AHSCT in CR1. However, our results should be interpreted with caution due to the retrospective nature of the study and limited number of included patients. The methodology of MRD assessment by flow cytometry has also changed during the study period. It should be highlighted that the prognostic value of MRD before transplant was statistically demonstrated only for transplantations performed using peripheral blood as a source of stem cells, but not for bone marrow.<sup>26</sup>

Another absorbing aspect of AHSCT relates to patients with Philadelphia-positive ALL that has never been considered as an option for this patient subgroup. One hundred and seventy seven Philadelphia-positive subjects were autografted and the results have recently been reported. It was demonstrated that year of transplantation was the only factor influencing the risk of treatment failure. The probability of LFS increased from 11% for transplants performed between 1996-2001, to 39% in years 2002-2006 and finally it reached 57% for years 2007-2010. The better results were shown for ALL patients treated with tyrosine kinase inhibitors (TKI): LFS at 3 years was 65%. The further studies are required to confirm these satisfactory results.<sup>27</sup> The Ph status was known for 53 patients from our study cohort, and 9% of these subjects were Ph+ at transplant. None of these Ph+ patients received TKI and all were transplanted before 2000. The probability of 10-year LFS was 20% and this was comparable with Ph-negative and unknown subgroup. The other pre-TKI studies did not demonstrate any advantage of AHSCT over chemotherapy in this population.<sup>22,28</sup> Conversely, several recently published studies have shown that AHSCT preceding by TKI and chemotherapy may result in similar outcome to that achieved by allogeneic HSCT.<sup>29,30</sup> Based on the recent reports it seems reasonable to offer AHSCT for Ph+ ALL patients without a family donor and no detectable BCR-ABL transcript at transplant. However, there was lacking comparisons of matched URD HSCT with AHSCT in this cohort. In conclusion, AHSCT for high-risk ALL may constitute an alternative therapeutic option for

patients who lacking a family/alternative donor, however the long-term results remain unsatisfactory. Prospective studies focusing on MRD status are

required to re-evaluate the role of AHSCT for high-risk ALL.

## References:

1. Annino L, Vegna ML, Camera A, Specchia G, Visani G, Fioritoni G, Ferrara F, Peta A, Ciolli S, Deplano W, Fabbiano F, Sica S, Di Raimondo F, Cascavilla N, Tabilio A, Leoni P, Invernizzi R, Baccarani M, Rotoli B, Amadori S, Mandelli F. Treatment of adult acute lymphoblastic leukemia (ALL): long-term follow-up of the GIMEMA ALL 0288 randomized study. *Blood*. 2002; 99: 863-871. <http://dx.doi.org/10.1182/blood.V99.3.863> PMID:11806988
2. Thomas X, Boiron JM, Hugué F, Dombret H, Bradstock K, Vey N, Kovacsovic T, Delannoy A, Fegueux N, Fenaux P, Stamatoullas A, Vernant JP, Tournilhac O, Buzyn A, Reman O, Charrin C, Boucheix C, Gabert J, Lheritier V, Fiere D. Outcome of treatment in adults with acute lymphoblastic leukemia: analysis of the LALA-94 trial. *J Clin Oncol*. 2004; 22: 4075-4086. <http://dx.doi.org/10.1200/JCO.2004.10.050> PMID:15353542
3. Bassan R, Hoelzer D. Modern therapy of acute lymphoblastic leukemia. *J Clin Oncol*. 2011; 29: 532-543. <http://dx.doi.org/10.1200/JCO.2010.30.1382> PMID:21220592
4. Hunault M, Housseau JL, Delain M, Truchan-Graczyk M, Cahn JY, Witz F, Lamy T, Pignon B, Jouet JP, Garidi R, Caillot D, Berthou C, Guyotat D, Sadoun A, Sotto JJ, Lioure N, Casassus P, Solal-Celigny P, Stalnikiewicz L, Audhuy B, Blachet O, Baranger L, Bene MC, Ifrah N. Better outcome of adult acute lymphoblastic leukemia after early genoidentical allogeneic bone marrow transplantation (BMT) than after late high-dose therapy and autologous BMT: a GOELAMS trial. *Blood*. 2004; 104: 3028-3037. <http://dx.doi.org/10.1182/blood-2003-10-3560> PMID:15256423
5. Ribera JM, Oriol A, Bethencourt C, Parody R, Hernandez-Rivas JM, Moreno MJ, del Potro E, Torn M, Rivas C, Besalduch J, Sanz MA, Ortega JJ. Comparison of intensive chemotherapy, allogeneic or autologous stem cell transplantation as post-remission treatment for adult patients with high-risk acute lymphoblastic leukemia. Results of the PETHEMA ALL-93 trial. *Haematologica*. 2005; 90: 1364-1356.
6. Hoelzer D, Thiel E, Löffler H, Buchner A, Ganser A, Heil G, Koch P, Freund M, Diedrich H, Ruhl H, Maschmeyer G, Lipp T, Nowrousian MR, Burkert M, Gerecke D, Pralle H, Müller U, Lunsken Ch, Fülle H, Ho AD, Kuchler R, Busch FW, Schneider W, Gorg Ch, Emmerich B, Braumann D, Vaupel HA, von Paleske A, Bartels H, Neiss A, Messerer D. Prognostic factors in a multicenter study treatment of acute lymphoblastic leukemia in adults. *Blood*. 1988; 71: 123-131. PMID:3422030
7. Gupta V, Yi QL, Brandwein J, Minden MD, Schuh AC, Wells RA, Chun K, Kamel-Reid S, Tsang R, Daly A, Kiss T, Lipton JH, Messner HA. The role of allogeneic bone marrow transplantation in adult patients below the age of 55 years with acute lymphoblastic leukemia in first complete remission: a donor vs no donor comparison. *Bone Marrow Transplant* 2004; 33: 397-404. <http://dx.doi.org/10.1038/sj.bmt.1704368> PMID:14688816
8. Thiebaut A, Vernant JP, Degos L, Hugué FR, Reiffers J, Sebban C, Lepage E, Thomas X, Fiere D. Adult acute lymphocytic leukemia study testing chemotherapy and autologous and allogeneic transplantation. A follow-up report of the French protocol LALA 87. *Hematol Oncol Clin North Am*. 2000; 14: 1353-1366. [http://dx.doi.org/10.1016/S0889-8588\(05\)70190-8](http://dx.doi.org/10.1016/S0889-8588(05)70190-8)
9. Dhedin N, Dombret H, Thomas X, Lheritier V, Boiron JM, Rigal-Hugué F, Vey N, Kuentz M, Reman O, Witz F, Delannoy A, Kovacsovic T, Bradstock K, Charrin C, Boucheix C, Gabert J, Blaise D, Fiere D, Vernant JP. Autologous stem cell transplantation in adults with acute lymphoblastic leukemia in first complete remission: analysis of the LALA-85, -87 and -94 trials. *Leukemia*. 2006; 20: 336-344. <http://dx.doi.org/10.1038/sj.leu.2404065> PMID:16357838
10. Patel B, Rai L, Buck G, Richards SM, Mortuza Y, Mitchell W, Gerrard G, Moorman AV, Duke V, Hoffbrand AV, Fielding AK, Goldstone AH, Foroni L. Minimal residual disease is a significant predictor of treatment failure in non-T-lineage adult acute lymphoblastic leukaemia: final results of the international trial UKALL XII/ECOG 2993. *Br J Haematol*. 2010; 148: 80-89. <http://dx.doi.org/10.1111/j.1365-2141.2009.07941.x> PMID:19863538
11. Holowiecki J, Cedrych I, Krzemien S, Rudzka E, Holowiecka B, Jagoda K, Krawczyk M, Hellmann A, Maj S, Konopka L, Dmoszynska A, Krykowski E, Robak T, Kuratowska Z, Skotnicki A. Efficacy of an original cell kinetics-based chemotherapy regimen using rHu GM-CSF for induction and consolidation treatment of ALL. Preliminary analysis. In acute leukemias IV. Prognostic factors. Buchner T et al. (Eds), Springer-Verlag, Berlin. 1993; 287-291.
12. Holowiecki J, Giebel S, Krzemien S, Krawczyk-Kulis M, Jagoda K, Kopera M, Holowiecka B, Grosicki S, Hellmann A, Dmoszynska A, Paluszewska M, Robak T, Konopka L, Maj S, Wojnar J, Wojciechowska M, Skotnicki A, Baran W, Cioch M. G-CSF administered in time-sequenced setting during remission induction and consolidation therapy of adult acute lymphoblastic leukemia has beneficial influence on early recovery and possibly improves long-term outcome: a randomized multicenter study. *Leuk Lymphoma*. 2002; 43: 315-325. <http://dx.doi.org/10.1080/10428190290006099> PMID:1199563
13. Holowiecki J, Krawczyk-Kulis M, Giebel S, Jagoda K, Stella-Holowiecka B, Piatkowska-Jakubas B, Paluszewska M, Seferynska I, Lewandowski K, Kielbinski M, Czyz A, Balana-Nowak A, Krol M, Skotnicki A, Jedrzejczak WW, Warzocha K, Lange A, Hellmann A. Status of minimal residual disease after induction predicts outcome in both standard and high-risk Ph-negative adult acute lymphoblastic leukemia. The Polish Adult Leukemia Group ALL 4-2002 MRD study. *Br J Haematol*. 2008; 142: 227-237. <http://dx.doi.org/10.1111/j.1365-2141.2008.07185.x> PMID:18492099
14. Bruggemann M, Raff T, Flohr T, Gokbuget N, Nakao M, Droese J, Lüschen S, Pott C, Ritgen M, Scheuring U, Horst HA, Thiel E, Hoelzer D, Bartram CR, Kneba M. Clinical significance of minimal residual disease quantification in adult patients with standard-risk acute lymphoblastic leukemia. *Blood*. 2006; 107: 1116-1123. <http://dx.doi.org/10.1182/blood-2005-07-2708> PMID:16195338
15. Lee WI, Kantarjian H, Glassman A, Talpaz M, Lee MS. Quantitative measurement of BCR/abl transcripts using real-time polymerase chain reaction. *Ann Oncol*. 2002; 13: 781-788. <http://dx.doi.org/10.1093/annonc/mdf156> PMID:12075749
16. Gupta V, Richards S, Rowe J. Allogeneic, but not autologous hematopoietic cell transplantation improves survival only among younger adults with acute lymphoblastic leukemia in first remission: an individual patient data meta-analysis. *Blood*. 2013; 121: 339-350. <http://dx.doi.org/10.1182/blood-2012-07-445098> PMID:23165481
17. Horowitz MM, Messerer D, Hoelzer D, Gale MP, Neiss A, Atkinson A, Barrett J, Büchner T, Freund M, Heil G, Hiddemann W, Kolb HJ, Löffler H, Marmont AM, Maschmeyer G, Rimm AA, Rozman C, Sobocinski KA, Speck B, Thiel T, Weisdorf DJ, Zwaan FE, Bortin MM. Chemotherapy compared with bone marrow transplantation for adults with acute lymphoblastic leukemia in first remission. *Ann Intern Med*. 1991; 115: 13-18. <http://dx.doi.org/10.7326/0003-4819-115-1-13> PMID:2048858
18. Abdallah A, Egerer G, Goldschmidt H, Wannenmacher M, Körbling M, Ho AD. Continuous complete remission in adult patients with acute lymphoblastic leukemia at a median observation of 12 years after autologous bone marrow transplantation. *Br J Haematol*. 2001; 112: 1012-1015. <http://dx.doi.org/10.1046/j.1365-2141.2001.02634.x> PMID:11298600
19. Uckun FM, Kersey JH, Haake R, Weisdorf D, Ramsay NK. Autologous bone marrow transplantation in high-risk remission B-lineage acute lymphoblastic leukemia using a cocktail of three monoclonal antibodies (BA-1/CD24, BA-2/CD9, and BA-3/CD10) plus complement and 4-hydroperoxycyclophosphamide for ex vivo bone marrow purging. *Blood*. 1992; 79: 1094-1104.

- PMid:1531306
20. Doney K, Buckner CD, Fisher L, Petersen FB, Sanders J, Appelbaum FR, Anasetti C, Badger C, Bensinger W, Deeg HJ, Fefer A, Martin P, Petersdorf E, Schuening F, Singer J, Stewart P, Storb R, Sullivan KM, Witherspoon R, Hansen JA. Autologous bone marrow transplantation for acute lymphoblastic leukemia. *Bone Marrow Transplant.* 1993; 12: 315-321. PMID:8275030
  21. Labar B, Suci S, Zittoun R, Muus P, Fillet G, Peetermans M, Stryckmans P, Willemze R, Feremans W, Jaksic B, Bourhis JH, Burghouts JP, de Witte T. Allogeneic stem cell transplantation in acute lymphoblastic leukemia and non-Hodgkin's lymphoma for patients = 50 years old in first complete remission: results of the EORTC ALL-3 trial. *Haematologica.* 2004; 89: 809-817. PMID:15257932
  22. Goldstone AH, Richards SM, Lazarus HM, Tallman MS, Buck G, Fielding AK, Burnett AK, Chopra R, Wiernik PH, Foroni L, Paietta E, Litzow MR, Marks DI, Durrant J, McMillan A, Franklin IM, Luger S, Ciobanu N, Rowe JM. In adults with standard-risk acute lymphoblastic leukemia, the greatest benefit is achieved from a matched sibling allogeneic transplantation in first complete remission, and an autologous transplantation is less effective than conventional consolidation/maintenance chemotherapy in all patients: final results of the International ALL trial (MRC UKALL XII/ECOG E2993). *Blood.* 2008; 111: 1827-1833. <http://dx.doi.org/10.1182/blood-2007-10-116582> PMID:18048644
  23. Gorin NC. Autologous stem cell transplantation in acute lymphocytic leukemia. *Stem Cells.* 2002; 20: 3-10. <http://dx.doi.org/10.1634/stemcells.20-1-3> PMID:11796917
  24. Linker C, Damon L, Martin T, Blume K, Forman S, Snyder D, Wolf J, Negrin R. Autologous hematopoietic cell transplantation for high-risk ALL. *Bone Marrow Transplant.* 2011; 46: 460-461. <http://dx.doi.org/10.1038/bmt.2010.125> PMID:20531287
  25. Weisdorf D, Bishop M, Dharan B, Bolweel B, Cahn JY, Cairo M, Giralt S, Klein J, Lazarus H, Litzow M, Marks D, McCarthy P, Miller C, Milone G, Russel J, Schultz KR, Sierra J, Wiernik P, Keating A, Loberiza F, Kollman C, Horowitz M. Autologous versus allogeneic unrelated donor transplantation for acute lymphoblastic leukemia: comparative toxicity and outcome. *Biol Blood Marrow Transpl.* 2002; 8: 213-220. <http://dx.doi.org/10.1053/bbmt.2002.v8.pm12014810>
  26. Giebel S, Stella-Holowiecka B, Krawczyk-Kulis M, Gokbuget N, Hoelzer D, Doubek M, Mayer J, Piatkowska-Jakubas B, Skotnicki AB, Dombret H, Ribera JM, Piccaluga PP, Czerw T, Kyrzcz-Krzemien S, Holowiecki J. Status of minimal residual disease determines outcome of autologous hematopoietic SCT in adult ALL. *Bone Marrow Transplant.* 2010; 45: 1095-1101. <http://dx.doi.org/10.1038/bmt.2009.308> PMID:19855438
  27. Giebel S, Labopin M, Gorin NC, Caillot D, Leguay T, Schaap N, Michallet M, Dombret H, Mohty M. Improving results of autologous stem cell transplantation for Philadelphia-positive acute lymphoblastic leukemia in the era of tyrosine kinase inhibitors: a report from the Acute Leukaemia Working Party of the European Group for Blood and Marrow Transplantation. *Eur J Cancer.* 2014; 50: 411-417. <http://dx.doi.org/10.1016/j.ejca.2013.08.027> PMID:24210524
  28. Wrzesien-Kus A, Robak T, Pluta A, Zwolinska M, Wawrzyniak E, Wierzbowska A, Skotnicki A, Jakubas B, Holowiecki J, Nowak K, Kuliczowski K, Mazur G, Haus O, Dmoszynska A, Adamczyk-Cioch M, Jedrzejczak WW, Paluszewska M, Konopka L, Palyneczko G. Outcome of treatment in adults with Philadelphia chromosome-positive and/or BCR-ABL-positive acute lymphoblastic leukemia-retrospective analysis of Polish Adult Leukemia Group (PALG). *Ann Hematol.* 2006; 85: 366-373. <http://dx.doi.org/10.1007/s00277-006-0099-z> PMID:16523310
  29. Ribera JM, Oriol A, Gonzalez M, Vidriales B, Brunet S, Esteve J, Del Potro E, Rivas C, Moreno MJ, Tormo M, Martín-Reina V, Sarrá J, Parody R, de Oteyza JP, Bureo E, Bernal MT. Concurrent intensive chemotherapy and imatinib before and after stem cell transplantation in newly diagnosed Philadelphia chromosome-positive acute lymphoblastic leukemia. Final results of the CSTIBES02 trial. *Haematologica.* 2010; 95: 87-95. <http://dx.doi.org/10.3324/haematol.2009.011221> PMID:19797728 PMID:PMC2805727
  30. Wetzler M, Watson D, Stock W, Koval G, Mulkey FA, Hoke EE, McCarty JM, Blum WG, Powell BL, Marcucci G, Bloomfield CD, Linker CA, Larson RA. Autologous transplantation for Philadelphia chromosome-positive acute lymphoblastic leukemia achieves outcomes similar to allogeneic transplantation- results of CALBG Study 10001 (Alliance). *Haematologica.* 2014; 99:111-115. <http://dx.doi.org/10.3324/haematol.2013.085811> PMID:24077846 PMID:PMC4007937