

Supplementary files

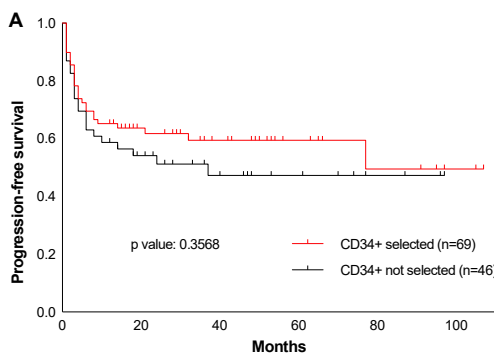
Outcome of patients with diffuse large B-cell lymphoma relapsing after autologous transplant before availability of CAR-T cell treatment

Stefanie von Matt, Ulrike Bacher, Yara Banz,

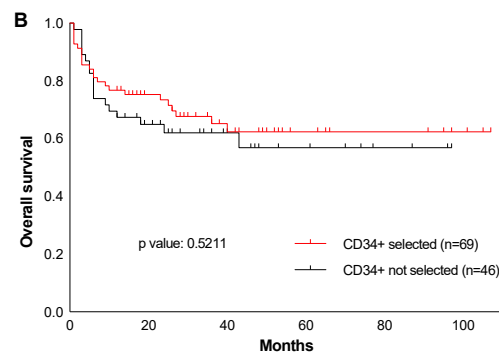
Behrouz Mansouri Taleghani, Urban Novak, Thomas Pabst

Online Supplement

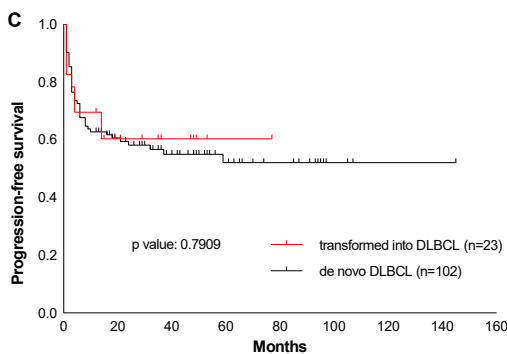
Supplementary Figure S1. PFS and OS analyzed according to various parameters like presence or absence of CD34+ stem cell selection (Figure A and B), transformed versus de novo lymphoma (Figure C and D), age at first diagnosis < versus ≥ 60 years (Figure E and F), presence or absence of b symptoms (Figure G and H) and bone marrow infiltration (Figure I and J) at first diagnosis, radiotherapy given during first- or second line therapy (Figure K and L) and remission state at ASCT (Figure M and N).



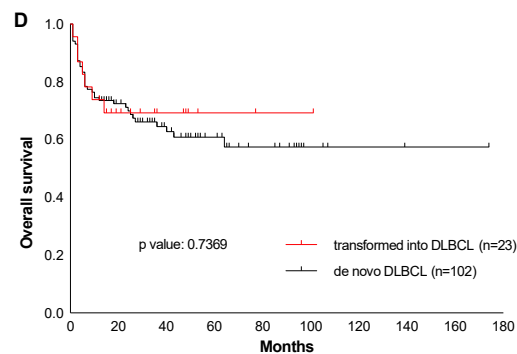
subject at risk (n)	46	22	12	7	3	0
	69	36	20	9	5	2



subject at risk (n)	46	26	13	7	3	0
	69	43	23	9	6	3



subject at risk (n)	102	52	31	18	12	3	1	1	0
	23	11	7	2	0	0	0	0	0



subject at risk (n)	102	63	36	20	13	4	2	1	1	0
	23	12	7	2	1	1	0	0	0	0

