

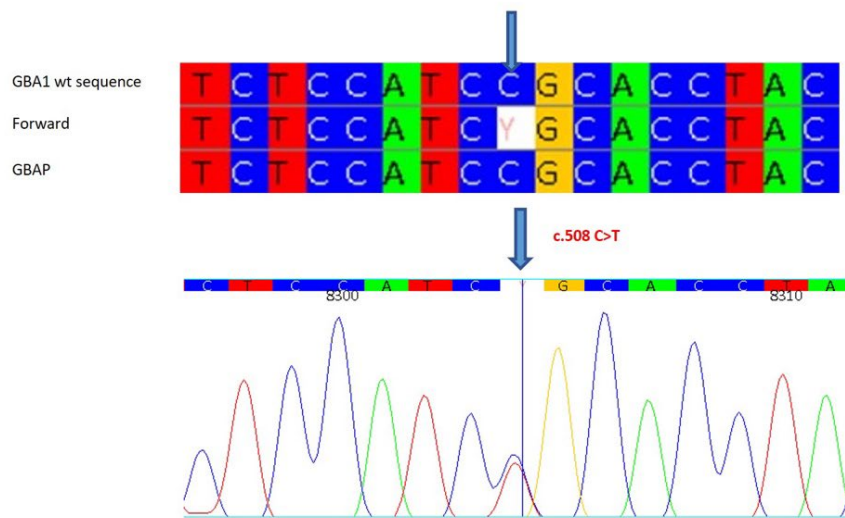
Scientific Letters

Early Diagnosis of Gaucher Disease and ASMD in Sardinia: The “Ichnos” Project

Supplementary Files

Supplemental Figure S1. Genetic analysis and electropherogram. Sanger sequencing shows (a) the c.508 C>T mutation in heterozygosity and (b) the c.1226 A>G mutation in heterozygosity in the patient. Each base corresponds to a color: red for Thymine, blue for Cytosine, yellow for Guanine, and green for Adenine. The arrows indicate the mutation.

a



b

